


# OUR MOST COMPACT HOME LIFT

DKL 4000 Product catalogue 2022





D.K Lift Services aims to make home lifts a natural part of people's everyday lives.

We believe that the definition of a modern home will change – that modern homes and contemporary living will include home lifts. Our journey started 20 years ago, with the simple idea of improving mobility everywhere. Today, D.K Lift Services can be found in various homes throughout the UK

Simplicity, quality and innovation are the hallmarks of all our activities. We are constantly seeking new ways to improve the quality, design and user friendliness of

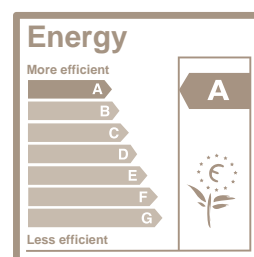
our products, as well as our environmental impact. Safety and reliability are top priorities, and we follow Europe's strictest quality and safety standards.

All our lifts are developed and produced in Stockholm, Sweden, and we are proud to maintain the highest level of quality in all stages of the process, from design through to final installation in your home.

# PRODUCT SUMMARY

DKL 4000 is the smallest and most compact home lift in our product range and on the market. The lift has been designed to meet all requirements for comfort, space and design. The lift is available in several different sizes, with an option to personalize it with details such as glass walls, a range of varied colours and different materials.

<b>Type of lift:</b>	Home lift intended for installation in private homes. Only to be used in buildings without public access.
<b>Technical compliance:</b>	European Machine directive 2006/42/EC European standard EN 81-41
<b>Drive system:</b>	Patented screw/nut system
<b>Rated speed (max):</b>	0,15 m/s
<b>Travel height:</b>	250 -13 000 mm
<b>Number of stops:</b>	Max. 6 stops per lift
<b>Number of doors:</b>	Max. 6 doors per lift
<b>Number of doors per floor:</b>	Max. 2 doors per floor
<b>Pit:</b>	50 mm (no pit is required when there is a threshold/ramp)
<b>Top height:</b>	Always 2 300 mm
<b>Platform control:</b>	"Hold to run", the destination button must be kept pressed down during the whole ride
<b>Landing control (on door):</b>	One-touch call
<b>Environment:</b>	Indoor
<b>Emergency lowering:</b>	Battery operated emergency lowering
<b>Control voltage:</b>	24V
<b>Motor:</b>	1,5kW
<b>Power supply:</b>	1-phase 230V 50Hz/6.6A/16A slow <sup>1)</sup>
<b>Rated load:</b>	250 kg



1) Frequency 50 or 60 Hz. Frequency Converter always included.

# CARRIER

The platform in its basic execution is delivered with a side wall (full height) including the destination panel.

It comes with LED lightening and a mirror covering the panel over the destination panel as standard. The panel under the destination panel and the small roof over the mirror is painted in RAL 7042 (grey) as standard, but can be painted in any RAL colour as an option.

## MIRROR

Mirror 800 x 970 mm is included as standard.

## FOOT BOX

As an option a special plate with a niche can be ordered for the bottom part of the platform. The niche adds a little bit of extra room at the bottom of the platform panel. Size of niche: Depth 80 mm, height: 197 mm, length: 456 mm.



# LIFT COLOUR

DKL 4000 can be painted in any RAL colour from the Chart K7 classic chart (except for pearl and fluoridating colours\*).

DKL 4000 is painted in Traffic White, RAL 9016, as standard. The paint is a soft-textured powder coat with a matt surface (gloss level 12).

The entire lift can be ordered in another colour as an option. It is also possible to order only the doors or walls in a different colour. When another colour is chosen for the doors, all the doors will be supplied in the same colour.

Common colours, have shorter lead time and lower price. The rest of the colours from RAL chart K7 classic have longer lead time and additional costs



## **Standard:**

Whole lift painted in standard colour RAL 9016 (Traffic white) except for the panels under the destination panel which are painted in RAL 7042 (Grey).

## **Full colour option:**

Whole lift painted in optional colour (Incl. shaft, doors and the panels under the destination panel.)

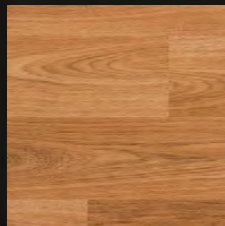
## **Lift partially painted in different colours:**

- Lift walls/Shaft in one colour.
- All door blades in one colour.
- All door frames in one colour (Also includes the door faceplate.)
- Panels under the destination panel in one colour.
- One of the above choices or a combination of them.

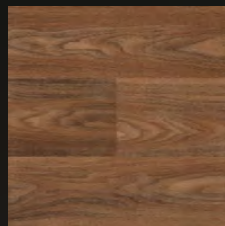


# FLOOR

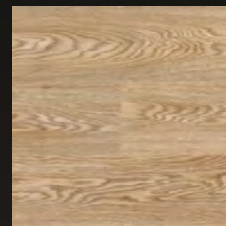
Vinyl or rubber flooring. Choose between the following options. It is also possible to order the lift without a floor, which enables the homeowner to choose and fit their own floor. The maximum thickness of an externally selected floor is 3 mm.



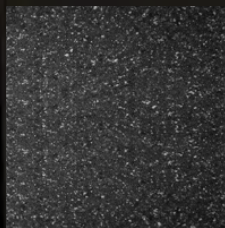
**European Oak Vinyl**  
Standard



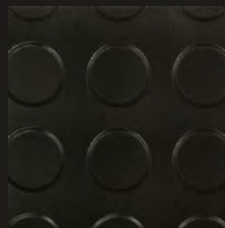
**Classic Walnut Vinyl**  
Standard



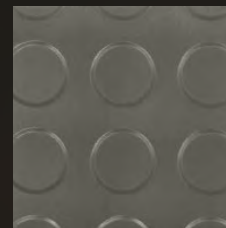
**Oiled Oak Vinyl**  
Standard



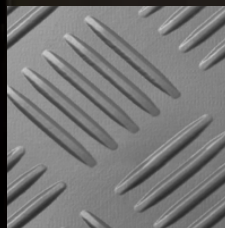
**Grey Vinyl**  
Standard



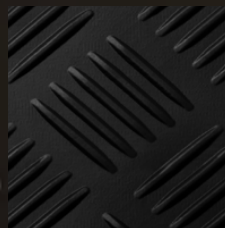
**Checker Stud Black Rubber**  
Option



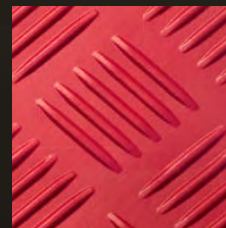
**Checker Stud Grey Rubber**  
Option



**Checker - Grey Rubber**  
Option



**Checker Black Rubber**  
Option



**Checker Red Rubber**  
Option



# DOORS

The landing doors installed at each landing are made of galvanized steel and laminated and toughened glass, 8 mm thick.



**Large glass door**



**Double hinged glass door**

Note that large glass doors for the B-side are not galvanized, they are made out of cold drawn steel. All doors are painted in RAL 9016 (Traffic white) but can be painted in any RAL colour as an option. The door frame and door blade can be painted in the same colour or the frame in one colour and the blade in another colour. For the same lift all doors must be painted in the same colour. A glassed area according to EN81-41 is standard for all doors. Standard is with clear glass (JT0). Optional is to have tinted glass (JT16) , dark tinted (JT5) or frosted glass (JT23).

The profiles around the glass are made of aluminium. The profiles can be painted in any RAL colour. If the door blade is in RAL 9016 (Traffic white) the profiles can be painted in the same colour as an option. If the door blade is painted in another RAL colour, the profiles will be in aluminium as standard, but can be painted in the same RAL colour as the door blade as an option. Note that aluminium profiles are standard and that painted profiles are an option.

All doors can be left- or right hinged. Doors are always delivered with door frames. It is not possible to order the door or the frame separately. Doors on B side are 800 mm wide.

It is also possible to have doors on the A and C side for platform size 1080 mm. These doors are 900 mm wide.

## LARGE GLASS DOOR

Large glass door with one glass window.

**Opening widths:** 800, 900 mm

**Opening heights:** 1800, 1900, 2000 mm

The actual height of the door is 40 mm higher since a plate that covers the joint between the door and the frame is mounted on the door.

**Glass window (vision):** 612x1472 mm (800 mm wide door), 712x1472 mm (900 mm wide door)

**Standard:** Door blade and door frame in RAL 9016 (Traffic white). Glass window: clear glass (JT0)

**Options:** Door blade and / or door frame in other RAL colour. Glass window: tinted glass (JT16), dark tinted (JT5), frosted (JT23)

Door opening width	Door opening height	Available for B-side	Available for A/C-side
800	1800 <sup>1)</sup>	805	-
	1900 <sup>1)</sup>		
	2000		
900	1800 <sup>1)</sup>	-	1080
	1900 <sup>1)</sup>		
	2000		

(mm)

<sup>1)</sup> Not available on top floor since top height of shaft is always 2300 mm

## DOUBLE HINGED GLASS DOOR

Double hinged glass doors are made of 17,5 mm laminated glass and always delivered with two internal door openers which opens the doors automatically. If the space in front of the door is limited it is a good solution to use the double hinged glass door.

**Opening widths:** 800, 900 mm

**Opening heights:** 2000 mm

The actual height of the door is 40 mm higher since a plate that covers the joint between the door and the frame is mounted on the door.

**Door blade:** Two blades, 400 mm or 450 mm wide

**Glass window (vision):** Two glasses, 332 x 1950 mm or 394 x 1950 mm

**Standard:** Door blade and door frame in RAL 9016 (Traffic white). Glass window in clear glass (JT0)

**Options:** Door blade and /or door frame in other RAL colour. Glass window in tinted (JT16), dark tinted (JT5), frosted (JT23).

Door opening width	Door opening height	Available for B-side	Available for A/C-side
800	2000	805	-
900	2000	-	1080

(mm)

## DOOR FRAME

On the A and C side the door is always delivered with a frame. The height of the frame depends on the door opening height and is always 240 mm higher than the door opening height. On the B-side there is no place for a door frame and the door is mounted without a frame.

Frame size on A/C-side 1160 mm.

Door opening height	Frame height
1800	2040
1900	2140
2000	2240

(mm)

### Clear glass

JT0

### Tinted glass

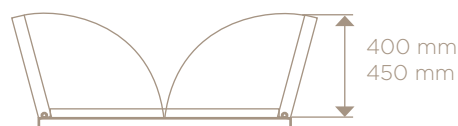
JT16

### Frosted glass

JT23

### Dark tinted glass

JT5





# DOOR CONTROL

The door control is either placed on the door frame of each landing door and/or placed away from the lift as an external control.

## DOOR CONTROL ON DOOR FRAME

Door control placed on the door frame on the lift. For 4000 there will only be place for a door faceplate on the A and C side (except when having a double hinged glass door).

## CALL BUTTON

The call button comes with a background lit frame which indicates the status of the lift.

- Green light indicates that the lift is at your floor. Lit only on the floor where the platform is at the moment.
- Red light indicates that the lift is occupied. It is busy and you can't call for it.
- The flashing light indicates that the security circuit is broken, e.g. that the emergency button is pressed, the door is open on another floor for more than one minute, the door is blocked or the safety frame is pressed down. The flashing light can also be activated by a sum alarm, more information is then available in the service memory.



The same call button is used when the door control is placed on the door frame, externally or as a radio controlled call button.

## CALL BUTTON IN WHITE PLASTIC BOX

4000 does not have a door frame on the B-side of the lift and therefore there is no place for a door faceplate on the lift. Standard solution for the B-side on Aritco 4000 is to have the call button in a white plastic box connected to the lift via a cable. Note that the plastic box is white for all lifts, independent of the colour of the the lift.



# COMMUNICATION

Two way communication is mandatory according to EN81-41. Choose from one of the following options or install your own phone.

## AUTODIALER

Equipment for emergency calls. Integrated on the destination panel. Dials automatically when the alarm button is pressed. When unanswered after a predefined time, the call is automatically forwarded to the next number.

The autodialer can be equipped with a GSM module (only 2G). Aritco does not supply SIM card.

## PHONE

The telephone works as a standard telephone but is intended for emergency calls. The phone is mounted on the platform panel. Equipped with redial memory, mute button and a lamp indicator for on/off. Can be equipped with a GSM module. Aritco does not supply SIM card.

## DC CONVERTER

When more autodialers are connected in series on one phone line the power on the phone line is not enough to drive more than one autodialer. In this case, a DC-converter is needed for each lift. The DC-converter 12-24 V is used as external power supply for the autodialer.



---

# EUROPEAN STANDARDS AND SAFETY

DKL 4000 comply with the Machine Directive 2006/42/EC, by following the harmonized standard EN 81-41. The lifts are also compliant with the Electromagnetic compatibility (EMC) – 2004 and Low voltage Directive 2006/95/EC. The lifts are type approved, CE marked. EI60 – Fire & smoke proof door complies with the lift directive 95/16/EC and EN 81-58. A certificate for respective lift is available on Cloud.

---



# D.K LIFT

SERVICES LTD



Unit 2, Victoria Industrial Park  
Victoria Road, Dartford, DA1 5AJ

Company Registration: 10612544  
VAT Registration: 265450207

